



Handheld Wireless Vacuum Cleaner A11

Please read this manual carefully before use and keep it properly.

The adapter supplied with this product can only be used at an altitude below 2000m.

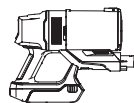
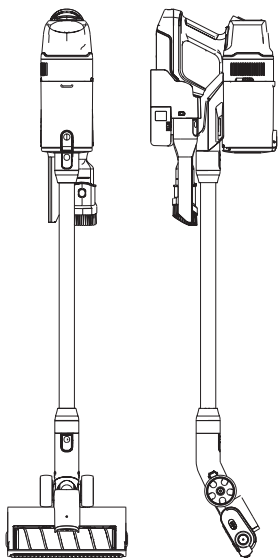
Precautions

Before using this product, please read the following instructions for safety carefully and follow all routine safety precautions; any operation inconsistent with this Instructions may cause damage to this product and may result in electric shock, fire and other accidental injuries.

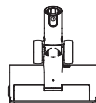
- This product is not suitable for those with physical, sensory or intellectual impairment or without experience and common sense (including children), unless it is operated under the supervision or guidance of others to ensure safe use.
- This equipment is for home use only. Do not use it outdoors.
- To power off the equipment, do not pull the power cord instead of the plug.
- Do not use this product to absorb any water in order to avoid any failure.
- Do not leave the equipment unattended after power on, which may cause a danger.
- Please place the equipment on a table or flat surface.
- In case of any damage to the power cord, it must be replaced by the manufacturer, its service agency or personnel with similar qualifications to avoid any danger.
- The following articles are not allowed to be sucked, which may damage the vacuum cleaner or cause a fire, leading to personal injury and other accidents:
 - a. Do not suck any large or sharp pieces, such as glasses
 - b. Do not suck any harmful or corrosive liquids (solvents, corrosive, detergents...)
 - c. Do not suck any flammable and explosive substances, such as gasoline and alcohol.
- Check the equipment and wires for any obvious damage regularly. In case of any damage to the housing or other parts, this equipment cannot be used.
- In case of failure of the machine, do not repair it by yourself to avoid any serious consequences. Please contact the seller's customer service center for help.

- The power adapter may only be used in a dry environment; During the use of the adapter, pay attention to the position of the power cord to prevent the risk of tripping; The power cord shall be kept away from the surface of a heating body (such as the surface of a cooker).
- Do not touch the power adapter or power cord with wet hands.
- Do not point the vacuum cleaner at any people or animal during the operation.
- Please use the original accessories.
- This equipment must be powered at the specified corresponding safe voltage.
- This equipment includes lithium battery; Do not burn the battery or expose it to high temperature, otherwise it may cause an explosion. This equipment may only be charged with a dedicated adapter.
- Do not use the vacuum cleaner during the charging.
- To avoid the blockage of HEPA filter element, it is recommended to clean the filter element regularly with a cleaning brush; It is recommended to replace the filter element every 3-6 months.
- All the data are from VIOMI laboratory, There are differences in actual use due to changes in the objective environment.

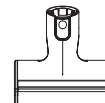
Product introduction



1.Main machine



2.Electric floor brush



3.Mini motorised brush



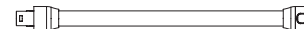
4.Carpet brush



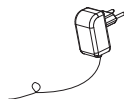
5.Long flat nozzle



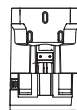
6.Two-in-one brush



7.Aluminum tube



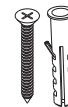
8.Adapter



9.Hanger



10.Bend pipe



11.Expansion screw *3

Specifications:

Model: V-HWVC15A

Dust cup volume: 0.6L

Rated power: 450W

Power adapter input: 100-240V~50/60Hz

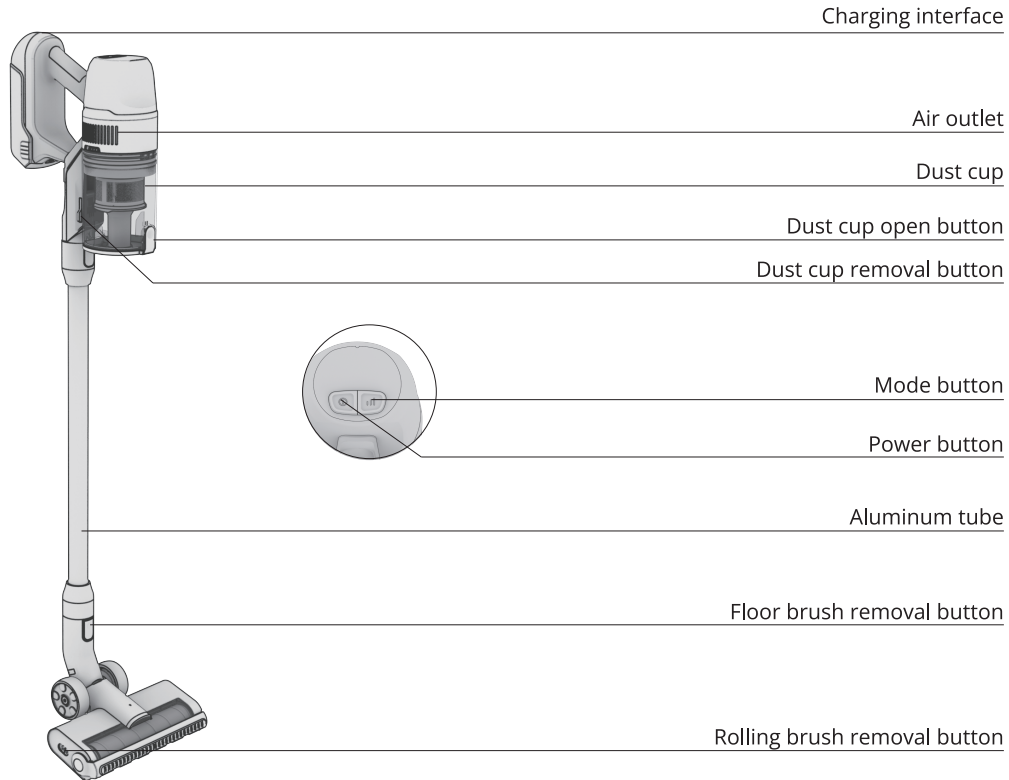
Rate voltage: 29.6V ---

Battery capacity: 2500mAh

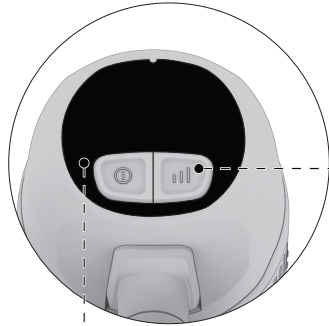
Charging time: 4±0.5h

Power adapter output: 35V --- 0.8A

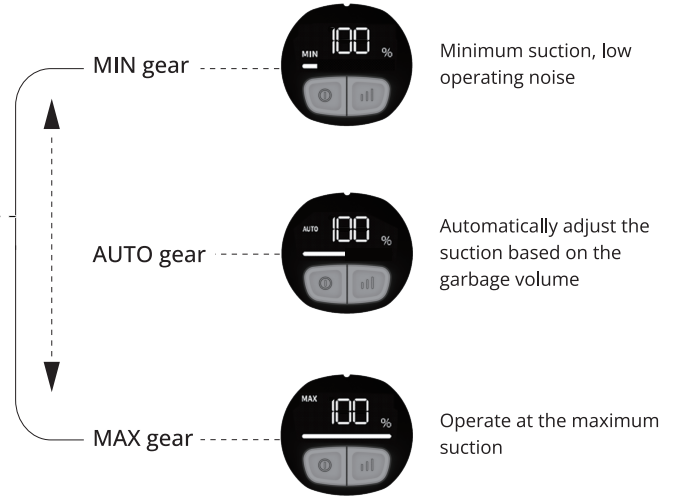
Description de fonction



Description of display panel of host machine



When changing the suction



When the power is lower than 20%, there will be a prompt of low power

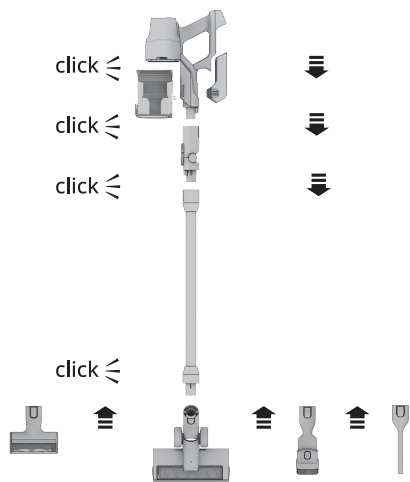
When the BLOCK icon is on, please clean the filter element timely and check whether there is any blockage in the air duct

- Power button
- Mode button

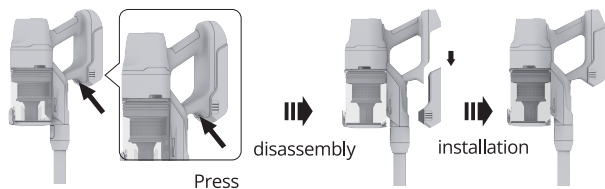
This button may be used to adjust the three-gear suction

Installation instructions

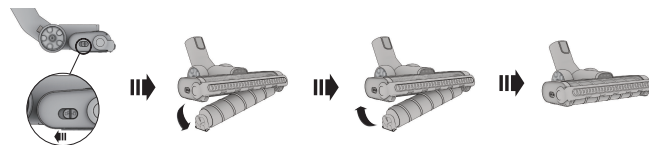
Installation of main body for the first use



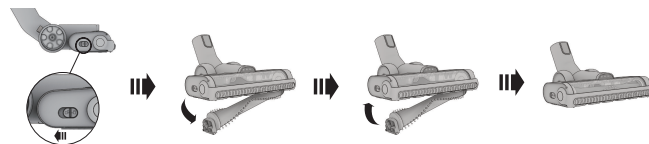
Disassembly and installation of battery



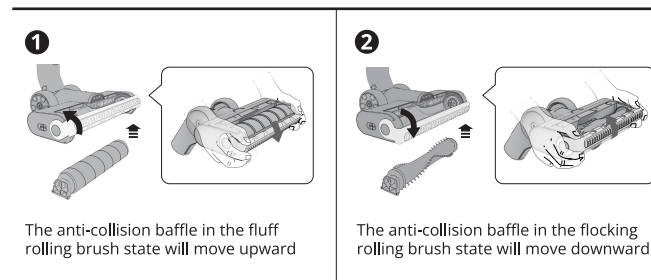
Disassembly and installation of fluff rolling brush



Disassembly and installation of carpet brush

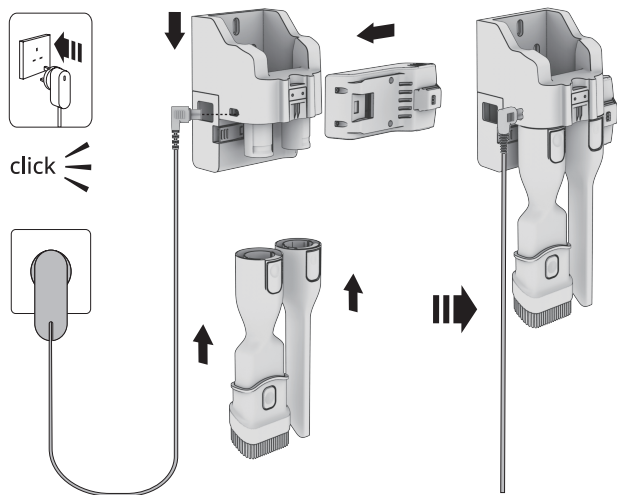


Anti-collision baffle



Instructions for use

Use of charging hanger



Duration

Low mode

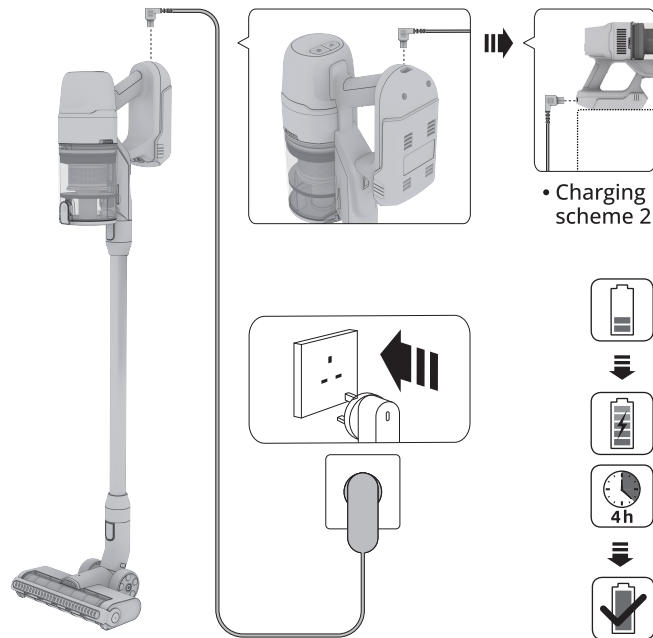
≥ 58 min

High mode

≥ 10 min

Charging

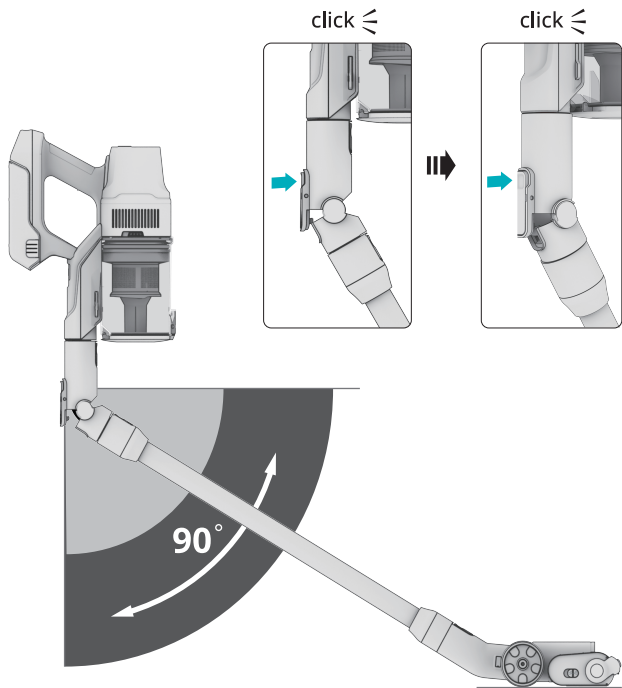
- Charging scheme 1



Charging duration of battery **4h**

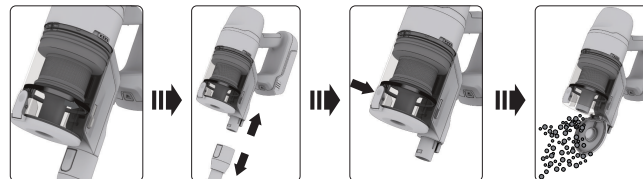
Instructions for use

Use of bend pipe

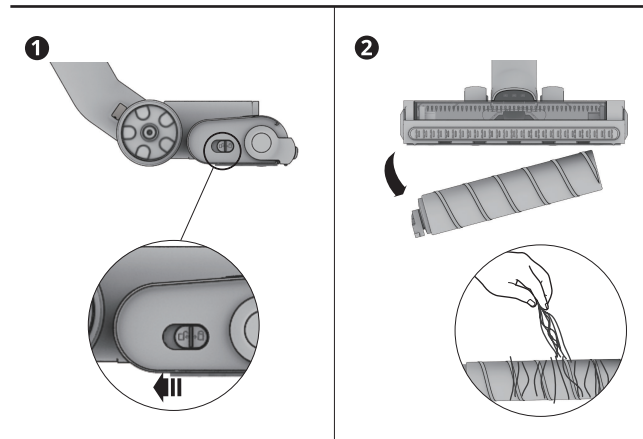


Routine maintenance

Remove the garbage in the dustbin

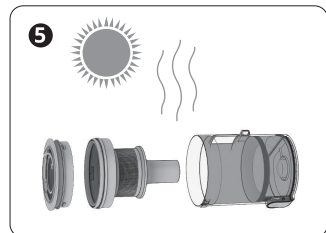
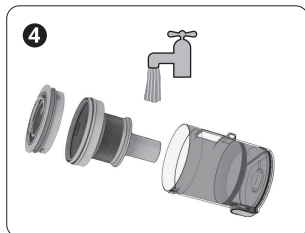
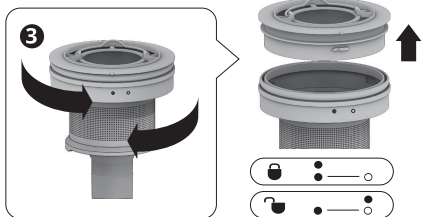
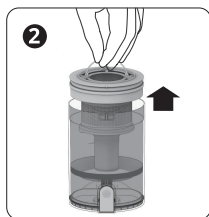
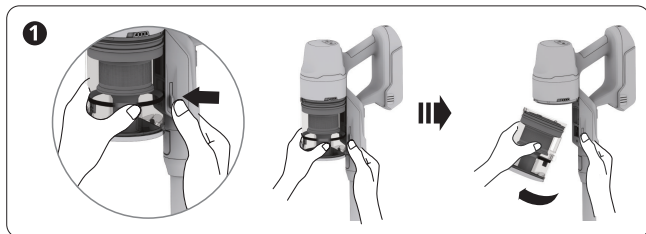


Cleaning of floor brush



Routine maintenance

Clean all parts in the dustbin



Troubleshooting instructions

When the product cannot work properly, please refer to the following description:

Failure code	Failure description	Solutions
E1	NTC abnormality	Replace the battery pack
E2	Charging abnormality	1. Check whether the adapter is incorrect 2. The adapter fails if not used incorrectly, which needs to be replaced
E3	Short circuit of floor brush	Replace the floor brush
E4	Blockage of floor brush	1. Check whether the rolling brush is blocked by any foreign matters. If yes, please clean them 2. If the error is still reported after cleaning the foreign matters, the floor brush needs to be replaced
E5	Fan abnormality	Replace the main motor
E6	Low charging voltage	Replace the battery pack
E7	Fan blockage	1. Check whether there are any foreign matters in the floor brush, metal connecting pipe or air duct of the host machine 2. Clean the inlet HEPA and outlet HEPA



VIOMI

www.viomi.com

Manufacturer: Guangdong Lizi Technology Co., Ltd.
Address: Room 1-6, North of 1st Floor, Block A, Shengda Industrial Park, North No.2, Xinxi
Four Road, Xiashi Village, Lunjiao Town, Shunde District, Foshan, Guangdong, China

